



MONTHLY MEMBERSHIP PROGRESS REPORT

District 11 E1

Results as of: 2/17/2014 11:17:44AM

GMT: GARY ANDERSON

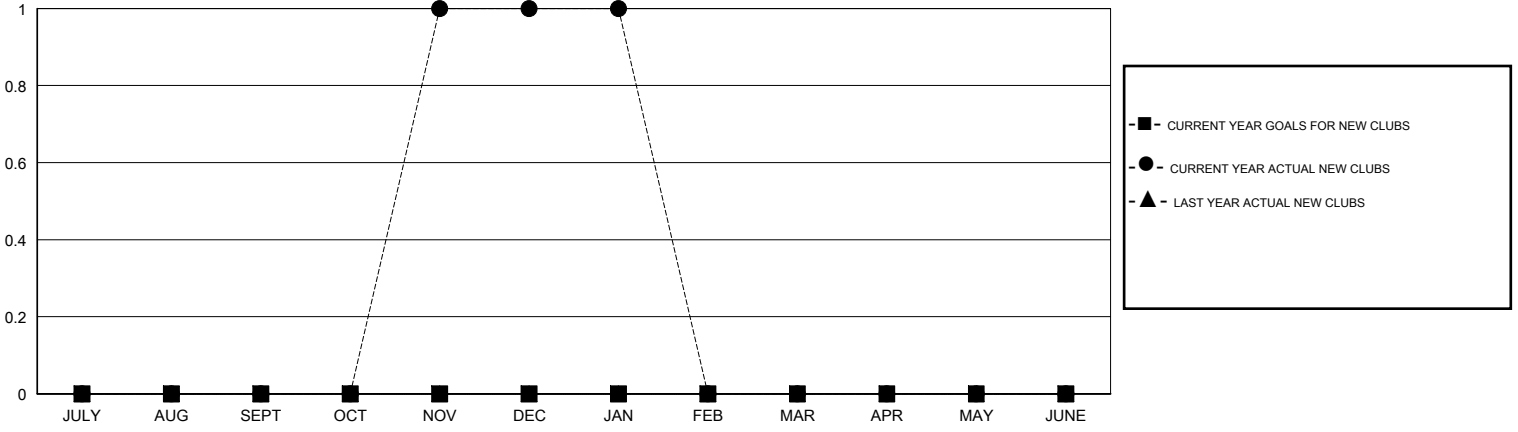
LOCATION MICHIGAN

GMT CA 1

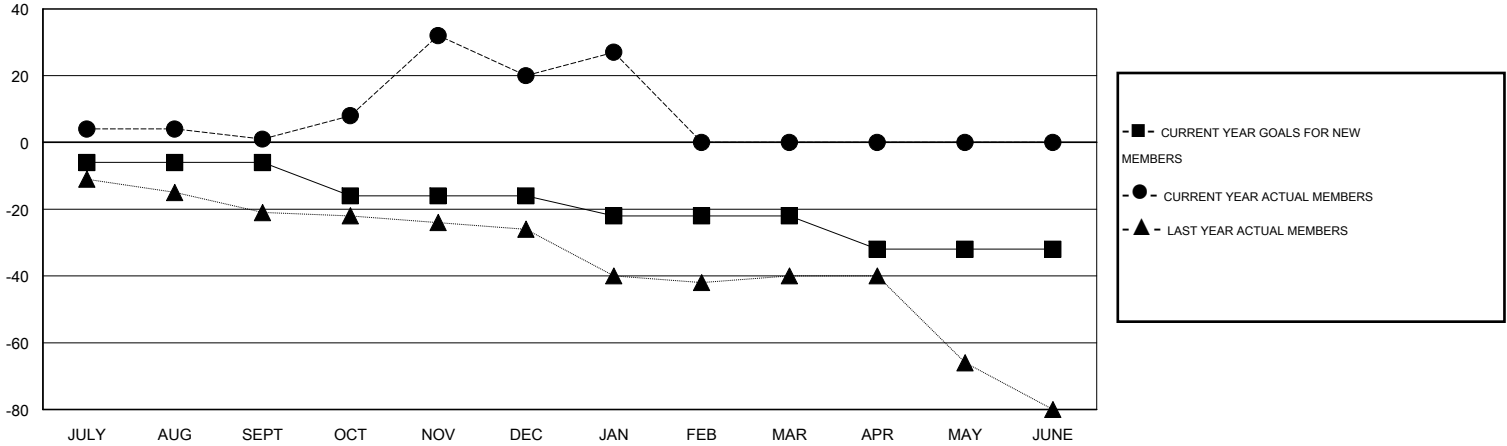
Clubs				
RESULTS FOR 2013-2014				
QUARTER	NEW CLUB GOAL	ACTUAL NEW CLUBS	ACTUAL DROPPED CLUBS	ACTUAL NET GAIN/LOSS
JULY/AUG/SEPT	0	0	0	0
OCT/NOV/DEC	0	1	0	1
JAN/FEB/MAR	0	0	0	0
APR/MAY/JUNE	0	0	0	0

Members				
RESULTS FOR 2013-2014				
QUARTER	NEW MEMBER GOAL	ACTUAL NEW MEMBERS	ACTUAL DROPPED MEMBERS	ACTUAL NET GAIN/LOSS
JULY/AUG/SEPT	-6	27	26	1
OCT/NOV/DEC	-10	63	44	19
JAN/FEB/MAR	-6	23	16	7
APR/MAY/JUNE	-10	0	0	0

GOALS AND ACTUAL NEW CLUBS CUMULATIVE



GOALS AND ACTUAL MEMBERS CUMULATIVE



DROPPED CLUBS: 0	33 CLUBS OF 46 ADDED 1 OR MORE NEW MEMBERS	<u>GENDER DISTRIBUTION</u>	
<u>DROPPED MEMBERS</u>		MALE	893 (70.99%)
DECEASED	11	FEMALE	365 (29.01%)
CLUB CANCELLED	0	CLICK HERE FOR HEALTH ASSESSMENT DATA	
OTHER	75	FAMILY UNIT MEMBERS	293
TOTAL	86	HEAD OF HOUSEHOLD	142
		NON-HEAD OF HOUSEHOLD	151